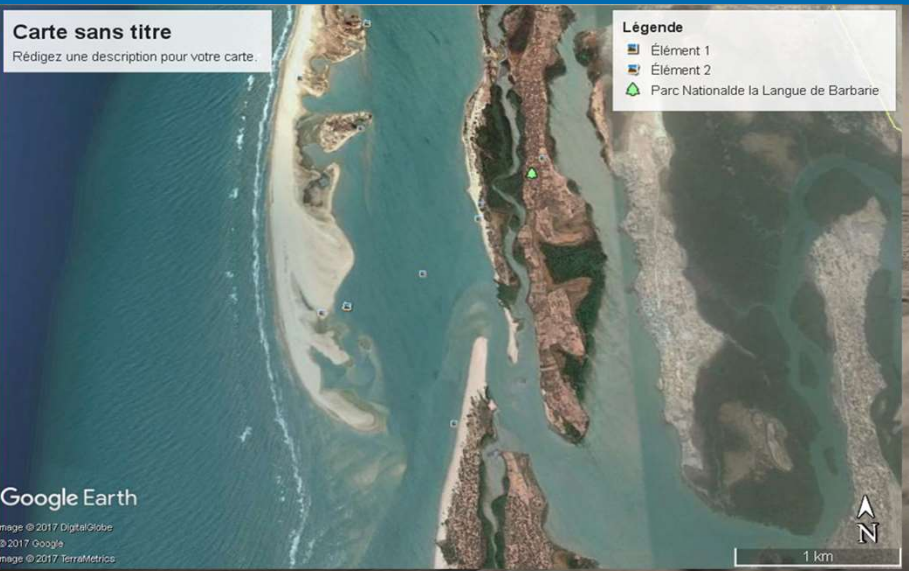


Carte sans titre  
Rédigez une description pour votre carte.

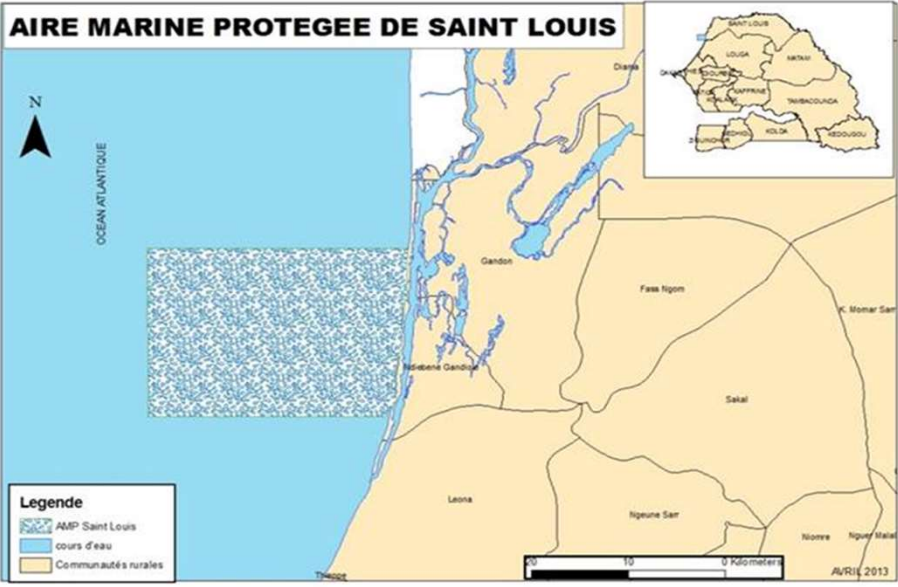


# « RECONSTRUCTION DES DUNES À SAINT-LOUIS, SÉNÉGAL »

## SOLUTIONS DOUCES D'ADAPTATION OU DE LUTTE CONTRE LES RISQUES CÔTIERS

# FEEDBACK FROM EXPERIENCES ON THE INSTALLATION OF TYPHAVELLES Marine Protected Area of Saint-Louis, SENEGAL

Présentation:  
**Didier K KABO, AMP de Saint-Louis**  
**Dr Moussa SAI I CSE**



## « RECONSTRUCTION DES DUNES À SAINT-LOUIS, SÉNÉGAL »

### SOLUTIONS DOUCES D'ADAPTATION OU DE LUTTE CONTRE LES RISQUES CÔTIERS



#### SOLUTION OVERVIEW

2 row grid

Typhavelles 2m long by 1m high;

Typhavelles fixed together by filao stakes 1.8m high;

Over a distance of more than 1.5 km;

Following a NW direction.

#### RESULTS

The reloading of the traps is noted with variable heights (70cm-90cm);

The formation of a dune cord;

The formation of embryonic dunes;

The increase in the length of the beach;

The appearance of vegetation (RN Mangrove) and “colonization by ground covers (Sesuvium portulacastrum, Ipomea and Cyperus maritimus in front and behind typhavelles;

Fixing the area with the reforestation of 10 ha behind the typhavelles.

## « RECONSTRUCTION DES DUNES À SAINT-LOUIS, SÉNÉGAL »

### SOLUTIONS DOUCES D'ADAPTATION OU DE LUTTE CONTRE LES RISQUES CÔTIERS

## LESSONS LEARNED

### NEGATIVE POINTS :

Periodic maintenance of structures

### GOOD POINTS)

- The Saint-Louis MPA experience is an NBS
- Return of the avifauna and natural regeneration of the mangrove on the site linked to the positive modification of the environmental conditions;
- Capacity building of the MPA on soft protection/restoration solutions and ecological monitoring;
- Better control of the site environment with its division into management units and their periodic monitoring with the constitution of a database;
- The use of *Typha australis*, an aquatic plant that invades the Senegal River and freshwater bodies;
- The involvement of local micro-enterprises such as the GIE Suxaali Aalam of Bango in the production of *Typha australis* palisades (eco-materials) and the promotion of women's initiatives;
- Development of market gardening downstream of typhavelles



RECONSTRUCTION DES DUNES À SAINT-LOUIS, SÉNÉGAL »

SESSION « RETOURS D'EXPERIENCES SUR L'INSTALLATION DES TYPHAVELLES »

*MERCI DE VOTRE ATTENTION*

