



REST-COAST

**EEMS20
DOLLARD50**



Eems-Dollard 2050 and CORE-PLAT

Towards an climate adaptive coastal zone by implementing restoration projects

Albert Vos - projectmanager

31 March 2022



This project receives funding from the European Union's Horizon 2020 Research and Innovation action under grant agreement No 101037097

Fourteen projects

All projects focus on the **main goals:**

1. Reduction of turbidity / restoration of natural dynamics
2. Beneficial use of sediment: clay, leveling low area's or building materials
3. Habitat development in the coastal zone

Combination with local livability / quality of the area wherever possible!



REST-COAST CORE-PLAT: Enhance cross border collaboration

Follow process strategy of Ems-Dollard (ED2050)

Plus

Joint effort Wadden Coast and Estuaries

- Develop **joint network and joint activities**
- Develop **shared understanding of approaches to adaptation management by restoration in both countries**
- Develop **joint tools**

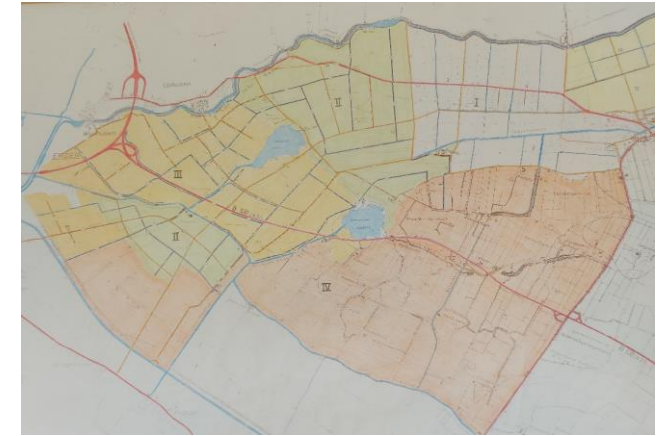


Jantsje Van Loon (WUR, NL) and
Joanna Staneva (HEREON, DE)

Shared understanding of approaches to adaptation management

a) What pilots/projects are relevant to explore (MENTI)?

- Climate cafes would be nice to organise with German universities
- Benjamin to check additional German projects
- Put focus on Eems-Dollard for hands-on restoration
- PRW-CoU factsheets for >30 sediment cases



Map of the Emden-Riepe region (about 3800ha)

b) What products should REST-COAST deliver and can this be linked to DE and NL plans on system management?

- LNKWN: more linked to sediment and erosion activities
- Seagrass coverage is very scarce, Hereon doing research-related activities
- GRO and LNKWN had a discussion, Germans do a lot of modelling in the silt and estuaries areas, would be good to elaborate in WP2, to help with the implementation of the pilots

c) How can partners contribute (MENTI)?

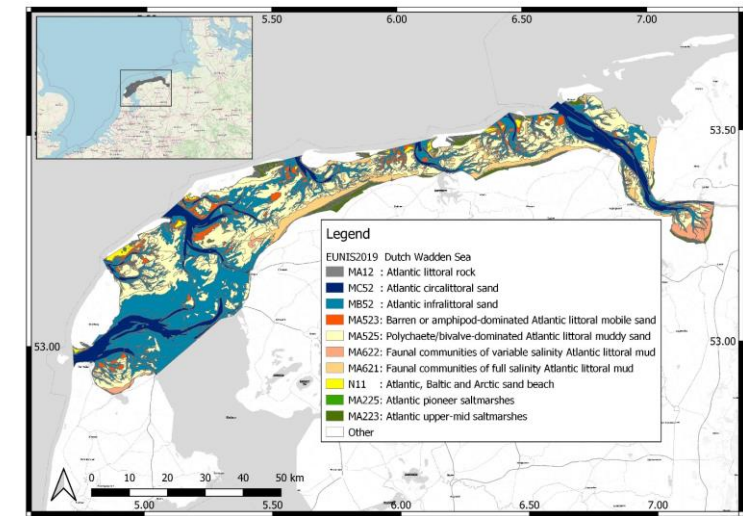
- trilateral working group (DK, DE, NL), locally in nature conversation groups (Kelly Elshot)
- sharing knowledge; important to define how this can be done
- define possible uses from people, related to hands-on restoration activities
- scenarios



Joint tools

a) What is the approach to build joint tools to increase understanding?

- risk analysis system for habitat and ecosystems
- Investigate hard measures
- Build a downstream risk assessment
- Currently, the German Bight model (incl. Eems-Dollard)
- Modelling of seagrass, current effect of seagrass vs no seagrass vs extension of seagrass
- Exchange of information on parameterisation/harmonisation



Source: Baptist (2022) –concept!-

b) Is the biotope approach with ESS production proposed by Martin Baptist useful to NL-DLD case? How does this relate to model development?

- Will be discussed in april meeting with NLKWN and HEREON

c) How can partners contribute? Are there postdocs, PhD's that can cooperate (MENTI)?

- biotope approach
- discuss in detail during modelling meeting beginning of April
- support and lessons learnt from Deltares relevant to Martin and vice versa

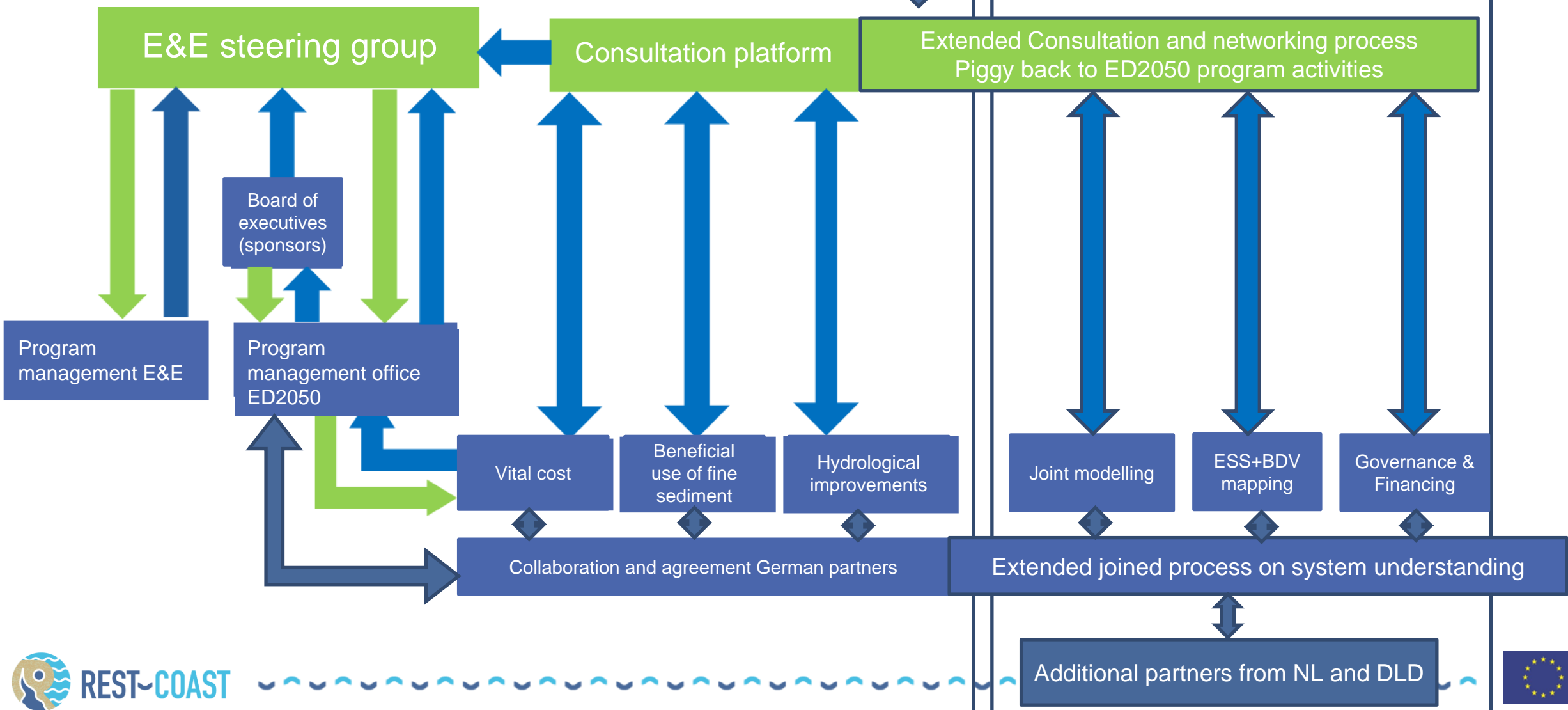


joint network and joint activities for sharing relevant practical approaches, concepts, knowledge and expertise

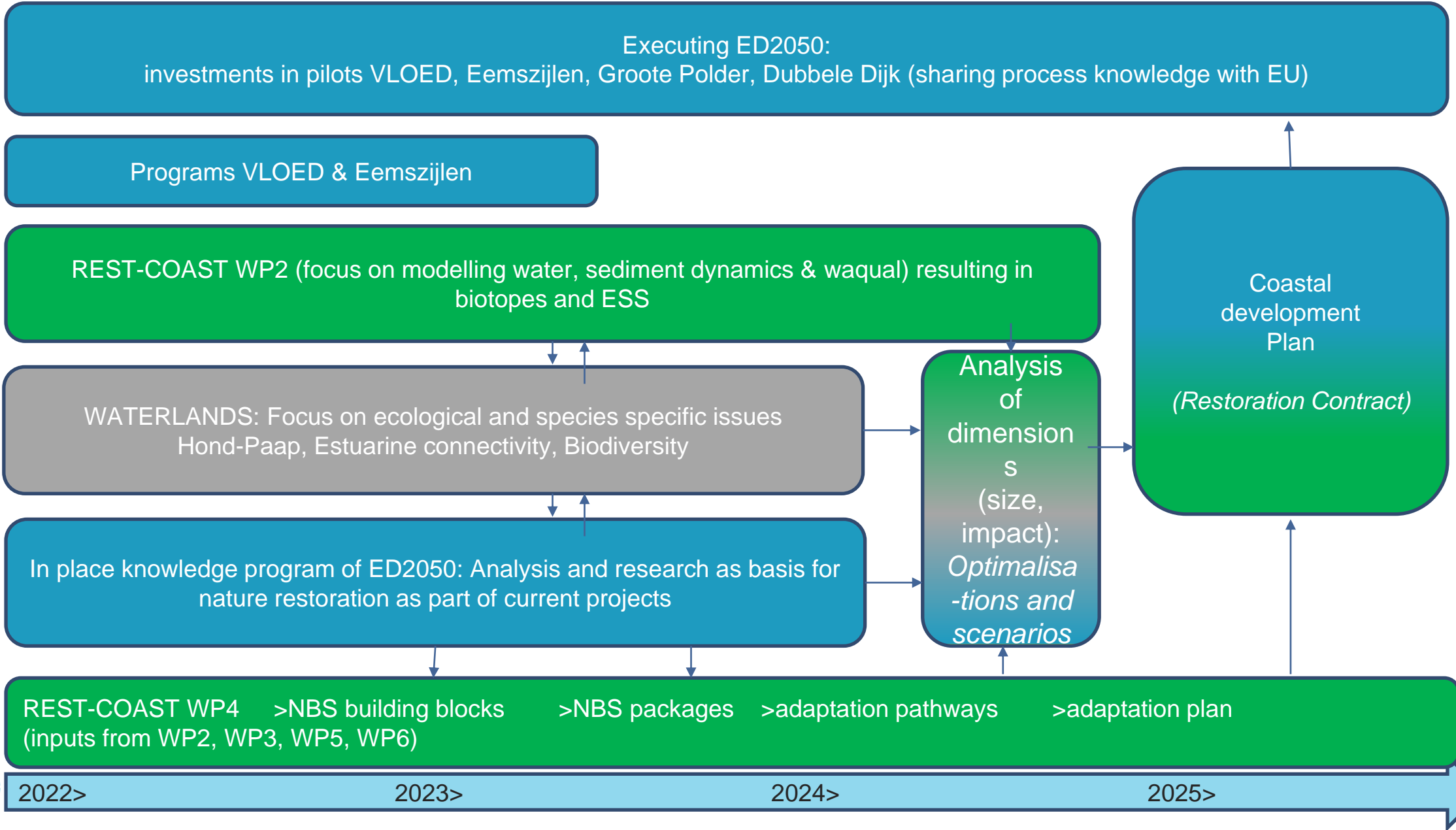
- Workshops relating the modelling process to the questions of GRO (topics on design, effects of intervention, etc.)
- Workshops on financing, modelling (system functioning), governance align with WP
- Set up a schedule/timeline of the different workshops over the next couple of years



Governance of a complex program ED2050



Integration REST-COAST & WATERLANDS within ED2050 program





Thank you!

