
Water Related Spirituality of Adaptation

— What do we mean? —



Aftermath of Typhoon Ketsana (Ondoy) 2009, Photos from Wikimedia Commons



During onslaught of typhoon Ketsana (Ondoy),
2009 Photo: Wikimedia Commons





Marikina Riverbanks and Urban Bliss Community after Ketsana, 2009 from Wikimedia Commons

Typhoon Goni (Rolly)



Source: Ernie Taeza, 2020

San Andres, Cantanduanes, Bicol Region,
November 6, 2020



OCHA

PHILIPPINES

Super Typhoon Goni (Rolly) Snapshot

as of 02 November 2020

Super Typhoon Goni (locally named Rolly) made 4 landfalls on 01 November in the provinces of Catanduanes, Albay, Quezon and Batangas before exiting in the West Philippines Sea. Areas along its track experienced intense rains, violent winds, mud flows and storm surges. Government and partners are currently conducting assessments on the extent of damage brought by the super typhoon. Local government units have started to conduct debris clearing.

INITIAL KEY FIGURES ON EFFECTS

2 M
AFFECTED POPULATION

361,700
PEOPLE IN
EVACUATION CENTRES

11
DEATHS

54,500
PEOPLE
OUTSIDE EVACUATION CENTRES

2
INJURED

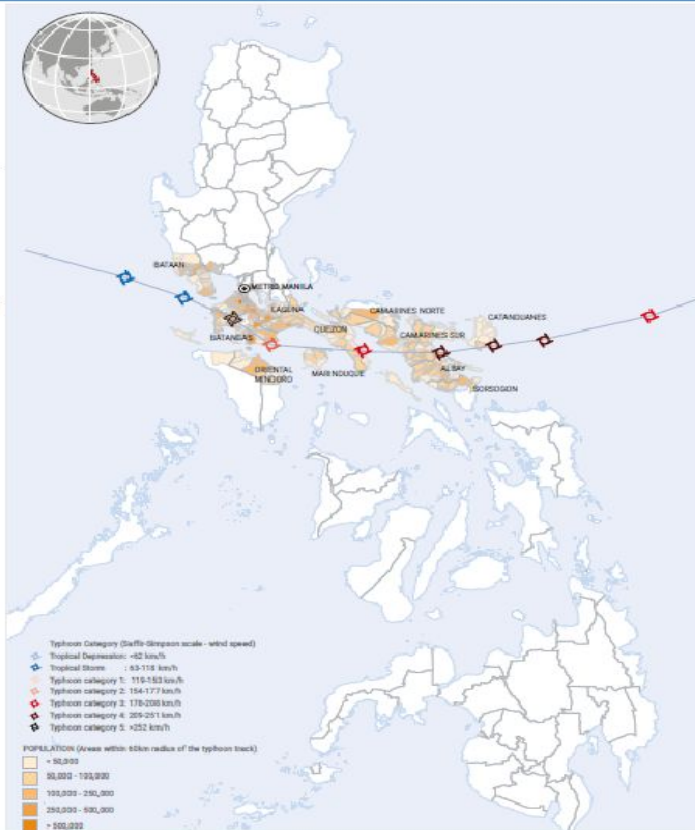
PRE-DISASTER KEY FIGURES IN CATANDUANES (1st landfall)

15,279
VULNERABLE HOUSEHOLDS
SOCIAL ASSISTANCE CASH
TRANSFER BENEFICIARIES

113,150
POOR POPULATION

53,482
HOUSING UNITS

| | | Roof | | |
|------|----------|--------|--------|----------|
| | | Strong | Light | Salvaged |
| Wall | Strong | 28,518 | 2,359 | 29 |
| | Light | 8,514 | 13,123 | 86 |
| | Salvaged | 128 | 221 | 129 |



PRE-DISASTER KEY FIGURES IN CAMARINES SUR

109,140
VULNERABLE HOUSEHOLDS
SOCIAL ASSISTANCE CASH
TRANSFER BENEFICIARIES

687,869
POOR POPULATION

396,642
HOUSING UNITS

| | | Roof | | |
|------|----------|---------|---------|----------|
| | | Strong | Light | Salvaged |
| Wall | Strong | 207,047 | 19,535 | 141 |
| | Light | 45,747 | 119,552 | 401 |
| | Salvaged | 496 | 828 | 623 |

PRE-DISASTER KEY FIGURES IN ALBAY

74,593
VULNERABLE HOUSEHOLDS
SOCIAL ASSISTANCE CASH
TRANSFER BENEFICIARIES

331,405
POOR POPULATION

275,601
HOUSING UNITS

| | | Roof | | |
|------|----------|---------|--------|----------|
| | | Strong | Light | Salvaged |
| Wall | Strong | 171,126 | 20,539 | 310 |
| | Light | 20,550 | 60,428 | 437 |
| | Salvaged | 451 | 643 | 519 |

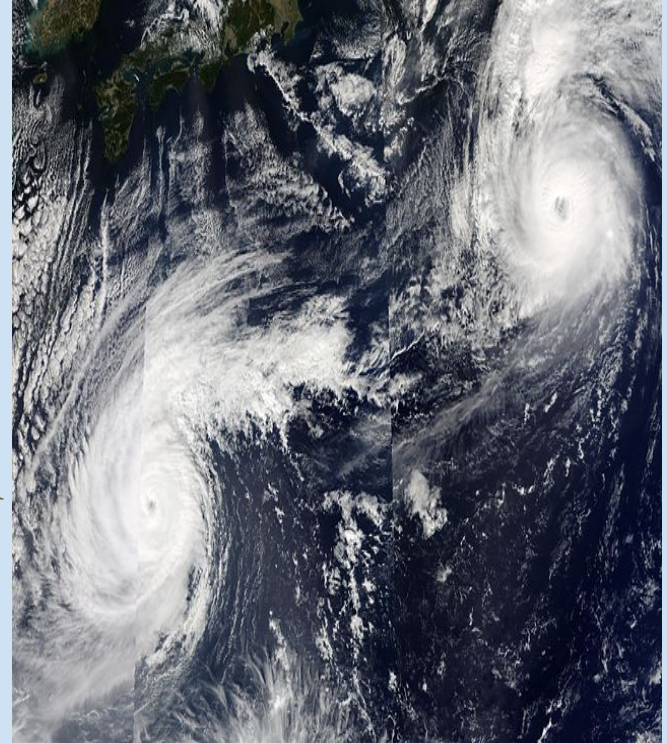
THOMAS BERRY'S TEN PRINCIPLES OF JURISPRUDENCE

“The Frog Does Not Drink Up the Pond in Which it Lives.”

Native American proverb

Principle #5

Every component of the Earth community has three rights:
the **right to be**,
the **right to habitat**, and
the **right to fulfil its role in the ever-renewing processes of the Earth community.**



Principle # 9

These *rights as presented here are based on the intrinsic relations that the various components of Earth have to each other*. The *planet Earth is a single community bound together with interdependent relationships*. No living being nourishes itself. Each component of the Earth community is immediately or mediately dependent on every other member of the community for the nourishment and assistance it needs for its own survival. This *mutual nourishment*, which includes the predator-prey relationship, *is integral with the role that each component of the Earth has within the comprehensive community of existence*.

References:

1. <https://www.therightsofnature.org/thomas-berrys-ten-principles-of-jurisprudence/>
2. Photos (not all) from Wikimedia Commons
3. Photos after Typhoon Goni: Ernie Taeza, 2020