



GLOBAL
CENTER ON
ADAPTATION

Global Center on Adaptation

Climate Resilient Water Services

Presented by
M. Feisal Rahman

Date:
March 15, 2023

A woman with short dark hair, wearing a striped long-sleeved shirt and a patterned skirt, is bent over, using a wooden-handled hoe to work the soil in a field. She is surrounded by green plants, some of which have large, dark, lobed leaves. The background shows a line of trees and a hazy mountain range under a cloudy sky.

Outline

1. Introduce the Global Center on Adaptation
2. Water at the heart of adaptation
3. Share an overview of the Water and Urban program activities

The Global Center on Adaptation

- We aim to **accelerate climate adaptation** worldwide to build resilience against the rising climatic risks
- Dual headquartered between Rotterdam and Groningen, with regional offices in Africa, South Asia and Asia Pacific.



GLOBAL
CENTER ON
ADAPTATION

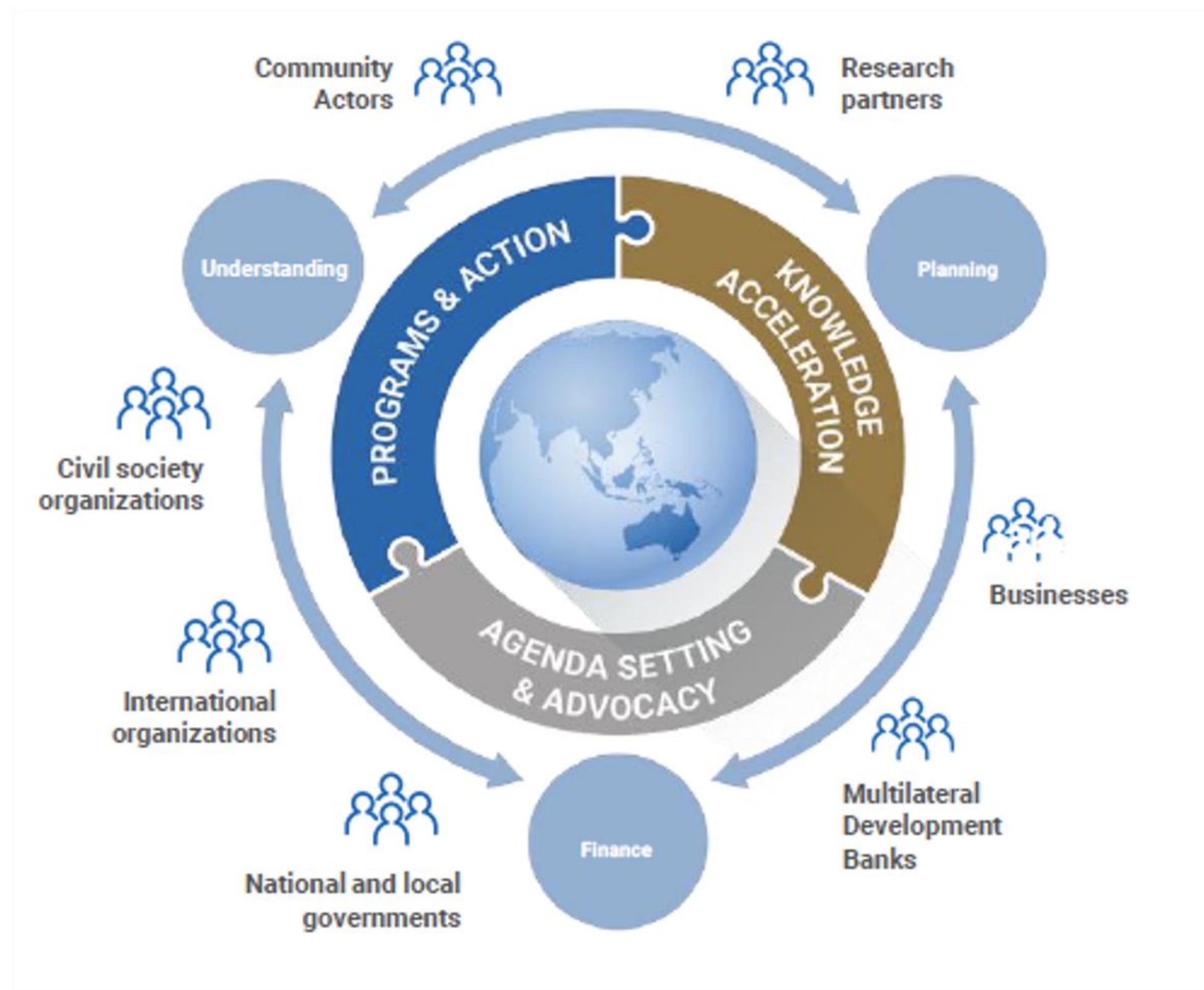


GLOBAL
CENTER ON
ADAPTATION

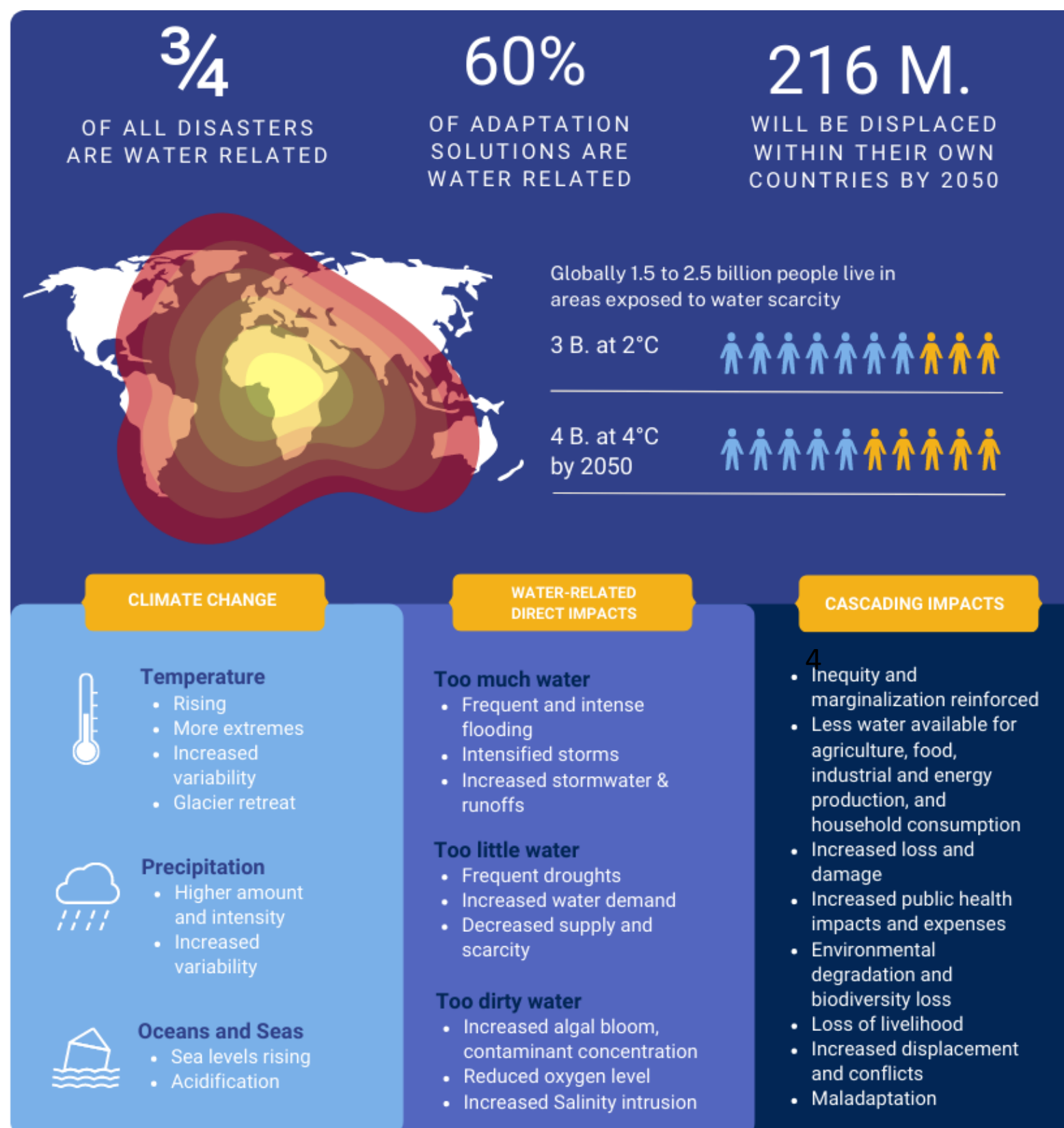
Global Center on Adaptation as a Solutions Broker



GLOBAL
CENTER ON
ADAPTATION



Water at the heart of Climate Action



Three reasons:

1. Water is the **primary medium** through which people experience climate change;
2. Societal and economic developments like rapid urbanisation compounded with climate change are **increasing demand** for water;
3. Managing water effectively is an **essential part of adapting** to climate change.

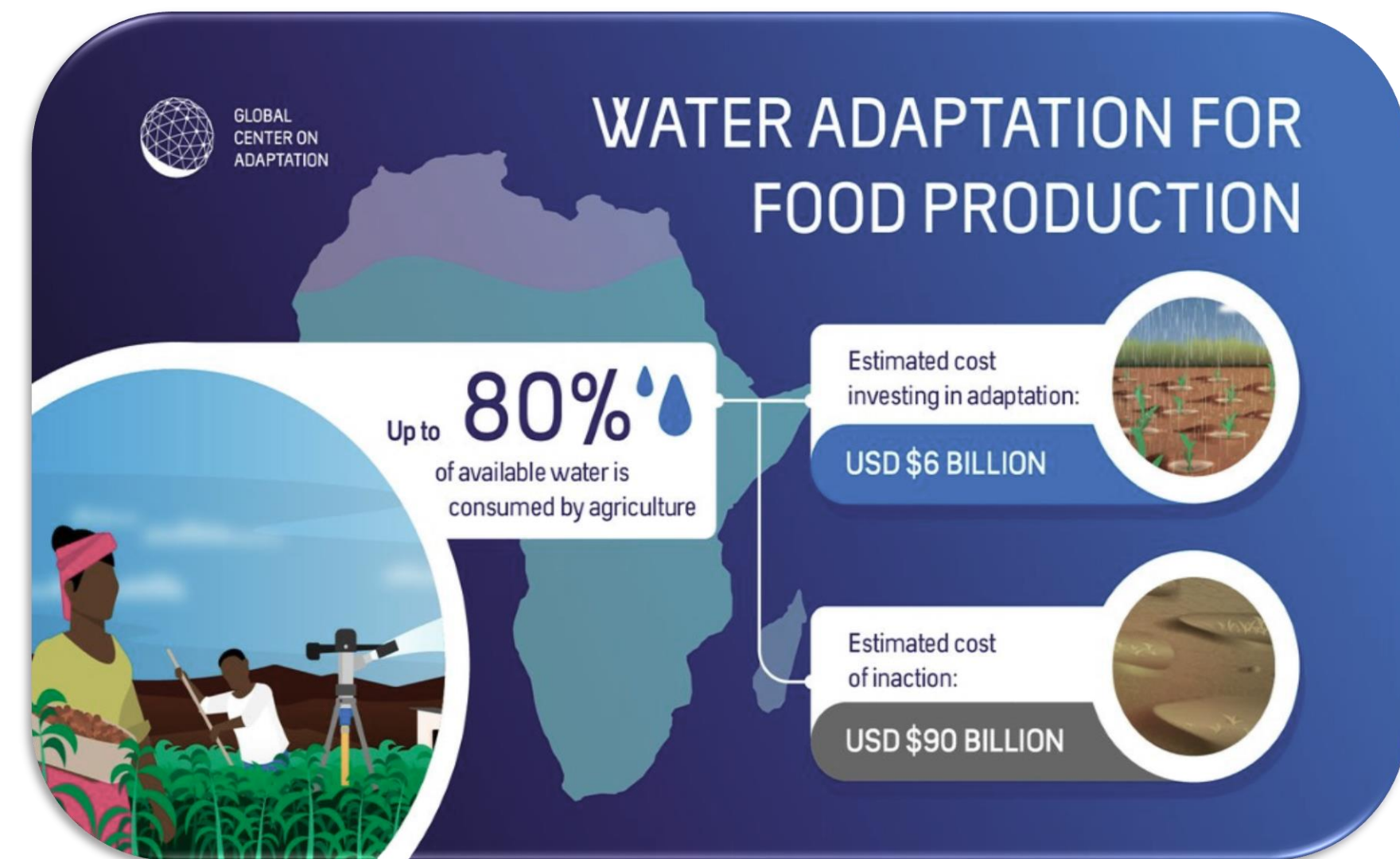


UN 2023 Water Conference

UN2023 offers a chance for the world to capitalize on this moment and put water at the heart of climate action.

Water in climate action can be incorporated in the following four ways:

1. Making water management resilient in response to new climate realities
2. Incorporating water considerations in climate mitigation actions
3. Increasing investments in water-based adaptation
4. Fostering justice, equity and inclusion in water and climate policies and actions





Our work

Water and Urban

Water and Urban Program



GLOBAL
CENTER ON
ADAPTATION

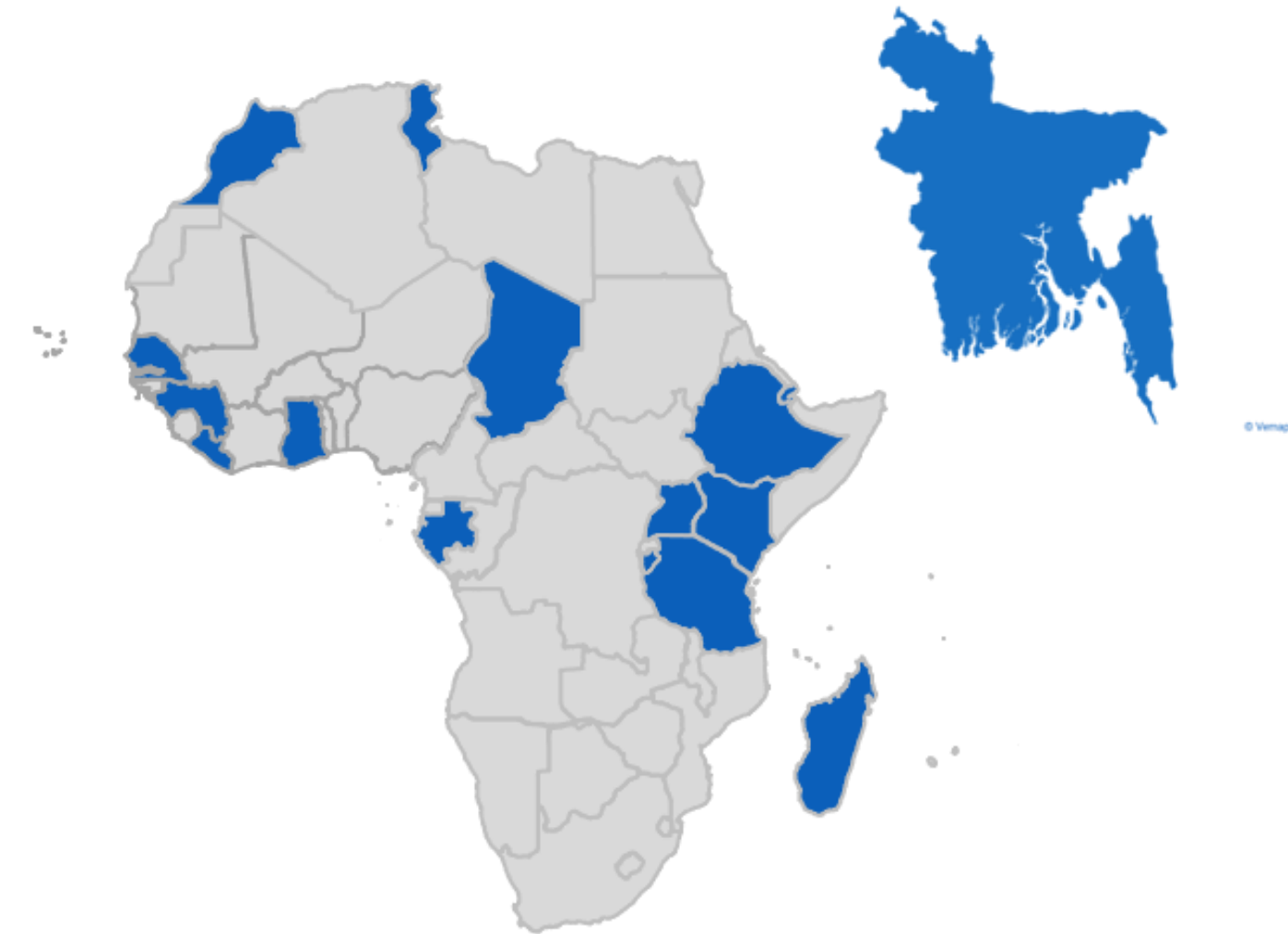
- We aim to rapidly:
 - accelerate and scale urban climate adaptation
 - provide climate resilient water services
- Act as a solutions broker and provide technical assistance

What we do

**US\$ 840 million
Leveraged in 2022**

- 1. City Adaptation Accelerator**
- 2. Climate Resilient Water Services**
- 3. Water Adaptation Community**

Where we work



Our partners



THE WORLD BANK



A woman with dark skin and a headwrap is kneeling in a field of tall green grass. She is holding a small clump of brown soil in her hands. In the background, there are more green plants and a distant mountain range under a cloudy sky. A blue rectangular box is overlaid on the left side of the image, containing white text.

Climate Resilient Water Services



Climate Risk Assessment and Design Support for Climate Resilient Water Services in Borana Zone, Ethiopia

Project Background

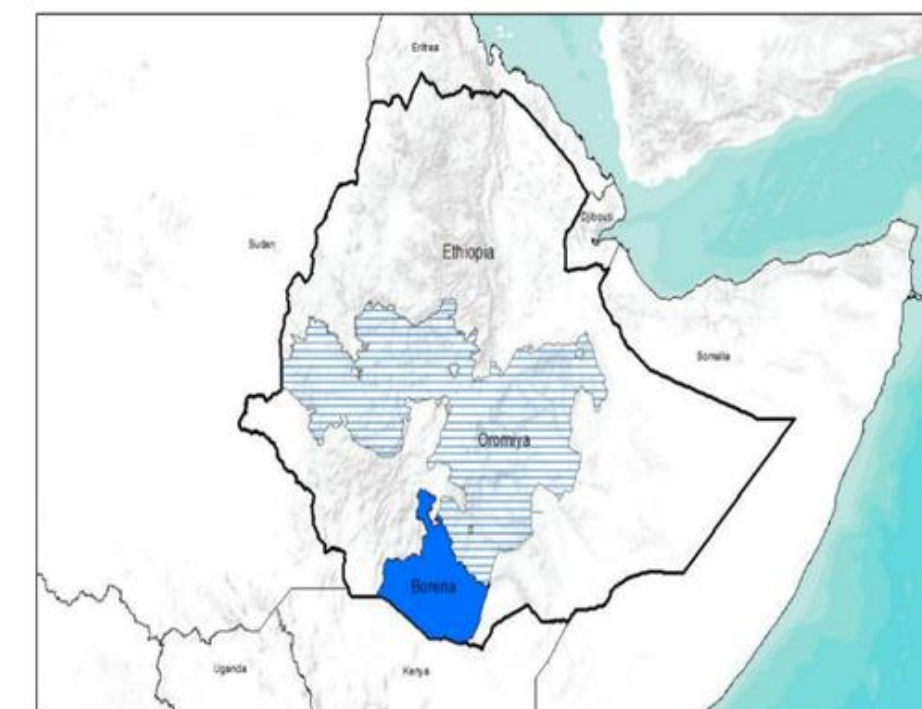
- Ethiopia's Borana region has been experiencing frequent **droughts leading to reduced water supplies, lands degradation**
- Partnered with **AFDB and the Ethiopia government** to conduct climate risk assessments and development of priority adaptation measures.
- The assessments will inform investments under **the Borana Resilient Water Development for Improved Livelihoods Program (BRWDLP)**.

Expected Achievements

Climate hotspots identified - A climate risk assessment among pastoralist communities in dryland areas of the Borana zone.

Increased resilience of assets - A suite of adaptation measures to increase the resilience of water assets

Gender sensitive water services - A Gender Action Plan that addresses identified gender gaps and is implemented under the BRWDLP for gender-responsive water resources management, and use.



The Borana Zone in Oromiya Regional State in Southern Ethiopia.



Project budget €300,000

Partners African Development Bank, Govt. of Ethiopia

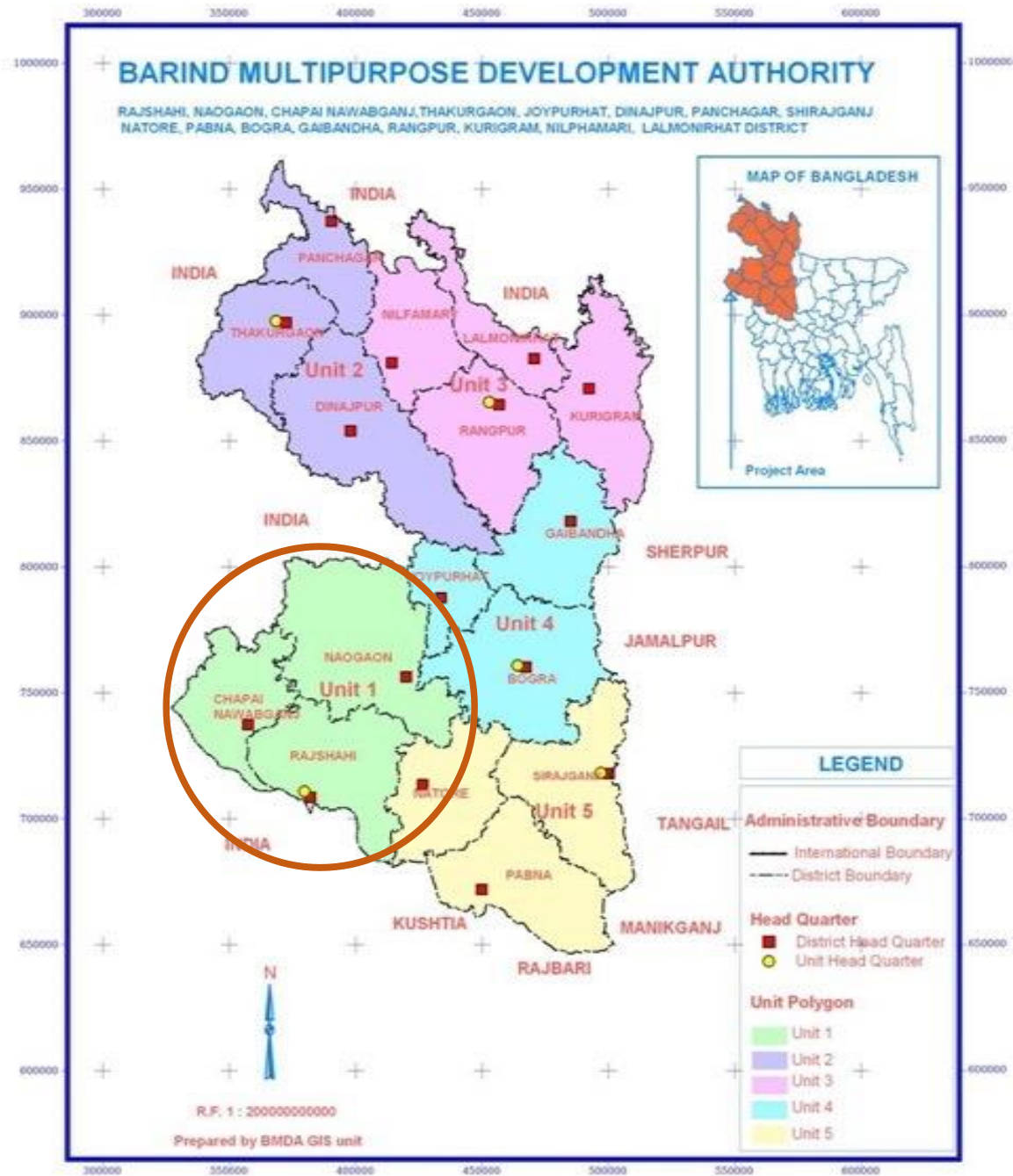
Community based Catchment Management- Bangladesh

Project Background

- Water management decisions and activities are **often limited within a unit** such as community, village or city
- **Catchment management** recognises the complex nature of water management and identifies options beyond operational
- **BRAC will be testing** community-based catchment management for resilient water services in drought prone and water scarce Barind region of Bangladesh.

Expected Achievements

- A series of **tools and methods** for catchment level water management solutions for the Barind region;
- A range of **capacity building and awareness** raising activities;
- **Integrated rural development** leveraged through BRAC's integrated development program will support climate resilient water services in the Barind region;



Project budget €300,000

Region

Barind, Bangladesh

Partner

BRAC Bangladesh



GLOBAL
CENTER ON
ADAPTATION

Contact Us

For any questions or
clarifications on our report.

Website

<https://communities.adaptationportal.gca.org/>

Phone Number

+31880886800

Email Address

info@gca.org

Climate Resilience Water Services - Delivering Climate Resilient and Sustainable Water Services to Rural Communities in Burundi

Project Background

Water supply infrastructure is not climate resilient in many regions in Burundi. Climate change causes reduced water supplies, landscape degradation, decreased water quality, increased frequency of droughts and floods and increased food insecurity.

The country's ambition is to enhance climate adaptation to strengthen the country's resilience in water management, source protection, with an overall ambition to enhance water security for socio-economic development.

GCA work supports development of the AFDB funded Construction, Rehabilitation and Extension of Drinking Water Supply Infrastructure (CREI) Project in 7 Provinces of Burundi.

Expected Achievements

Climate hotspots identified - A climate risk assessment that will serve to understand climate risks and identify hotspots.

Increased resilience of assets - A suite of adaptation measures to address the key challenges identified and priority actions implemented under the CREI project.

Strengthened Resilience of the people in seven provinces of Burundi to climate change through sustainable improvement of drinking water supply infrastructure and service.

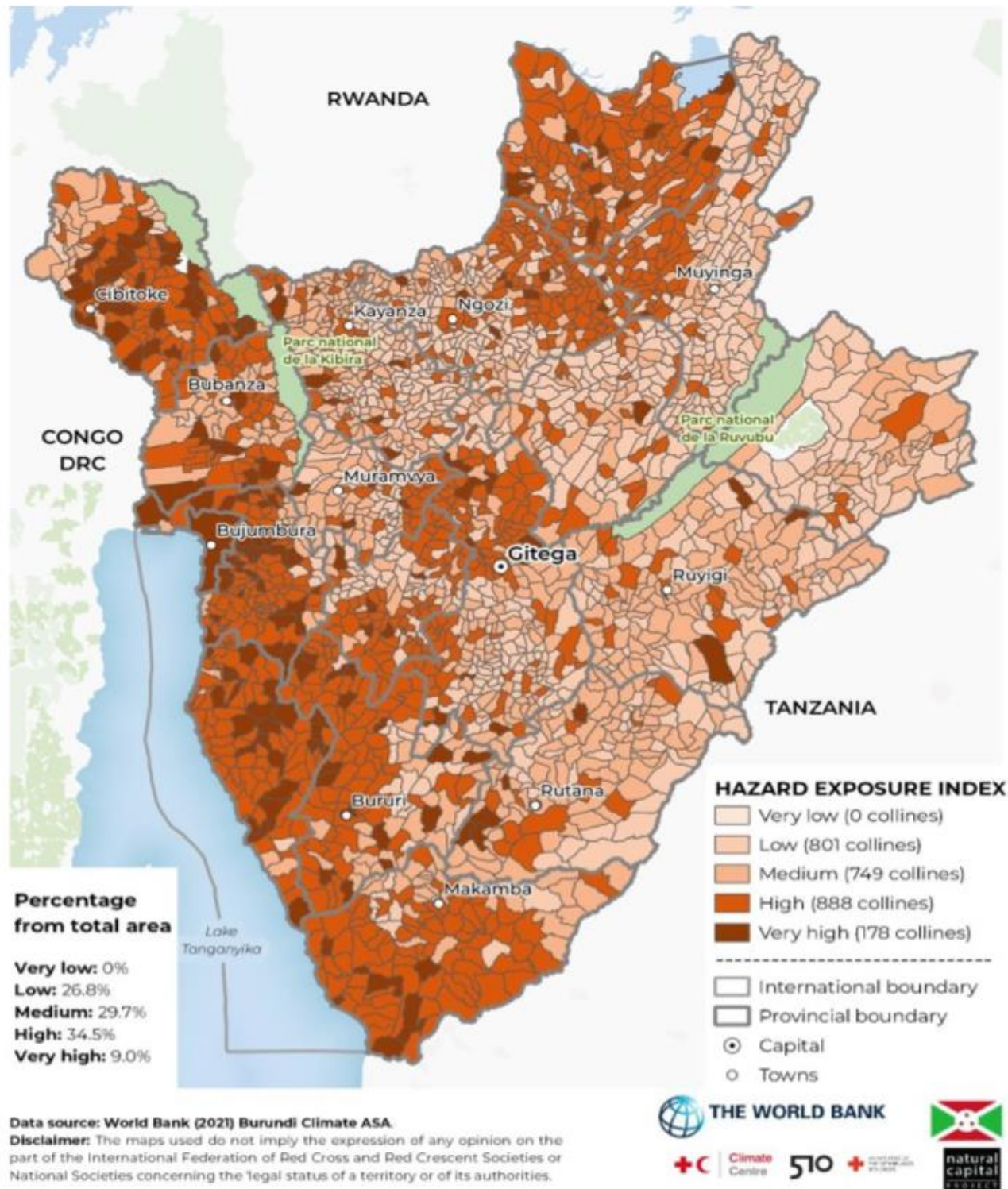
Project name Delivering Climate Resilient and Sustainable Water Services to Rural Communities in Burundi

Project budget €200,000

Country, city Burundi; Cibitoke, Bubanza , Ruyigi, Rutana, Gitega, Mwaro and Kayanza

Partners African Development Bank

GCA Business Line Climate Resilient Water Services



Composite hazard exposure index classification for Burundi



Climate Risk Assessment and Design Support for Climate Resilient Water Services in Borana Zone, Ethiopia

Project Background

- Ethiopia's Borana region owing to climate change has been experiencing increased frequency of **droughts leading to reduced water supplies, lands degradation**.
- The government's Growth and Transformation Plan (GTPII) target for rural water supply is **to improve water access** to 25L/person/day, and within 1000m, from 59 to 85% of the population by 2025.
- GCA is collaborating with **AFDB and the Ethiopia government** in undertaking climate risk assessments and development of priority adaptation measures.
- The assessments will inform investments under **the Borana Resilient Water Development for Improved Livelihoods Program (BRWDLP)**.

Expected Achievements

Climate hotspots identified - A climate risk assessment that will serve to understand associated risks among pastoralist communities in dryland areas of the Borana zone.

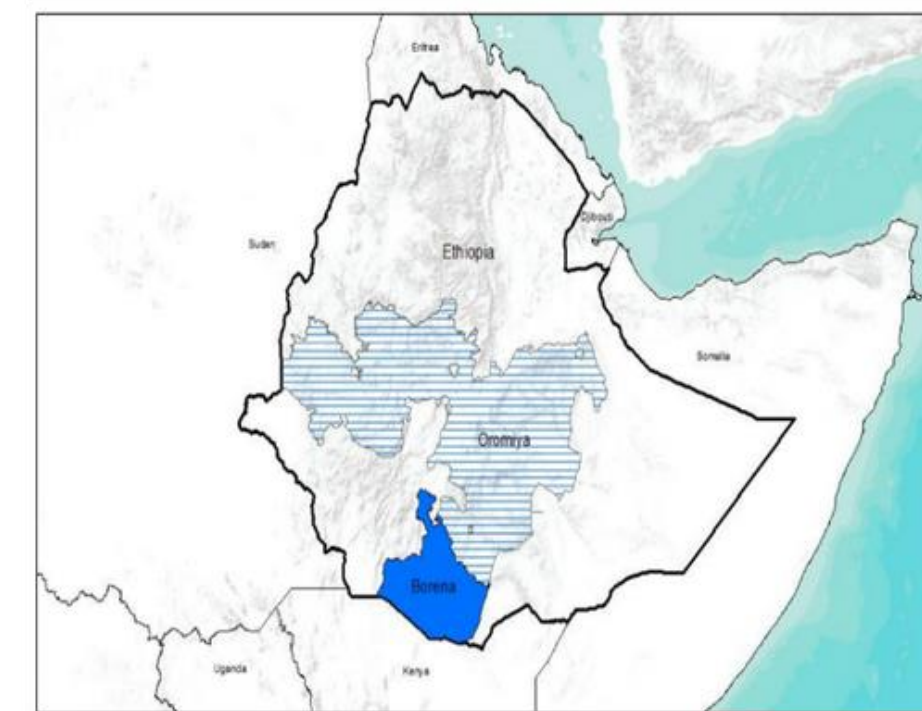
Increased resilience of assets - A suite of adaptation measures to increase the resilience of water assets is identified and priority actions implemented under the BRWDLP targeting 309,000 people and 975,000 livestock in 62 villages and 12 towns.

Gender sensitive water services - A Gender Action Plan that addresses identified gender gaps and is implemented under the BRWDLP for gender-responsive water resources management, and use.

Project budget €300,000

Partners African Development Bank, Govt.of Ethiopia

GCA Business Line Climate Resilient Water Services



The Borana Zone in Oromiya Regional State in Southern Ethiopia.



Climate Resilient Water Services in Uganda

Project Background

Water supply infrastructure is not climate resilient in many regions in Uganda. Climate change causes reduced water supplies, landscape degradation, decreased water quality, increased frequency of droughts and floods and increased food insecurity.

The government's ambition is to enhance climate adaptation through improved provisioning of water services with a target of 77% in rural areas and 90 % in urban areas by 2035.

GCA work supports development of the AFDB funded Water Supply and Sanitation Project Phase III (WSSP III).

Project name Water Supply and Sanitation Program (Phase III)

Project budget €300,000

Country, city Uganda

Partners African Development Bank, Government of Uganda, Ministry of Water and Environment

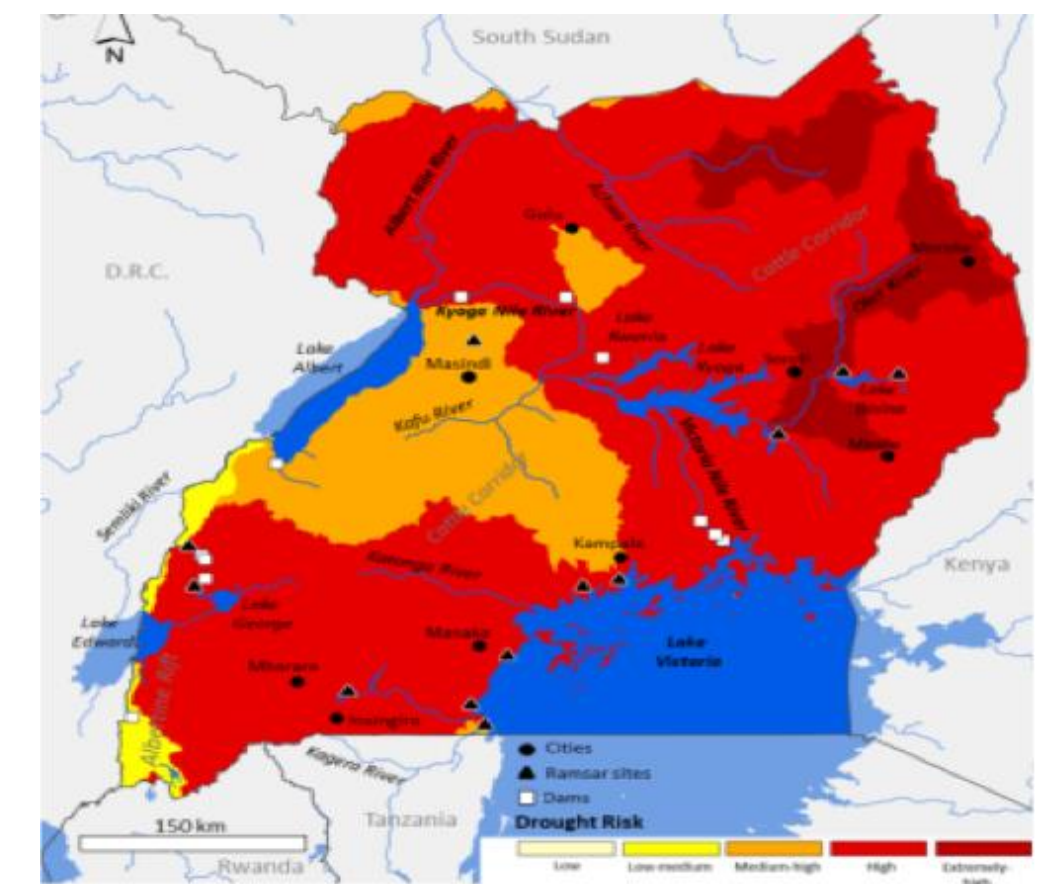
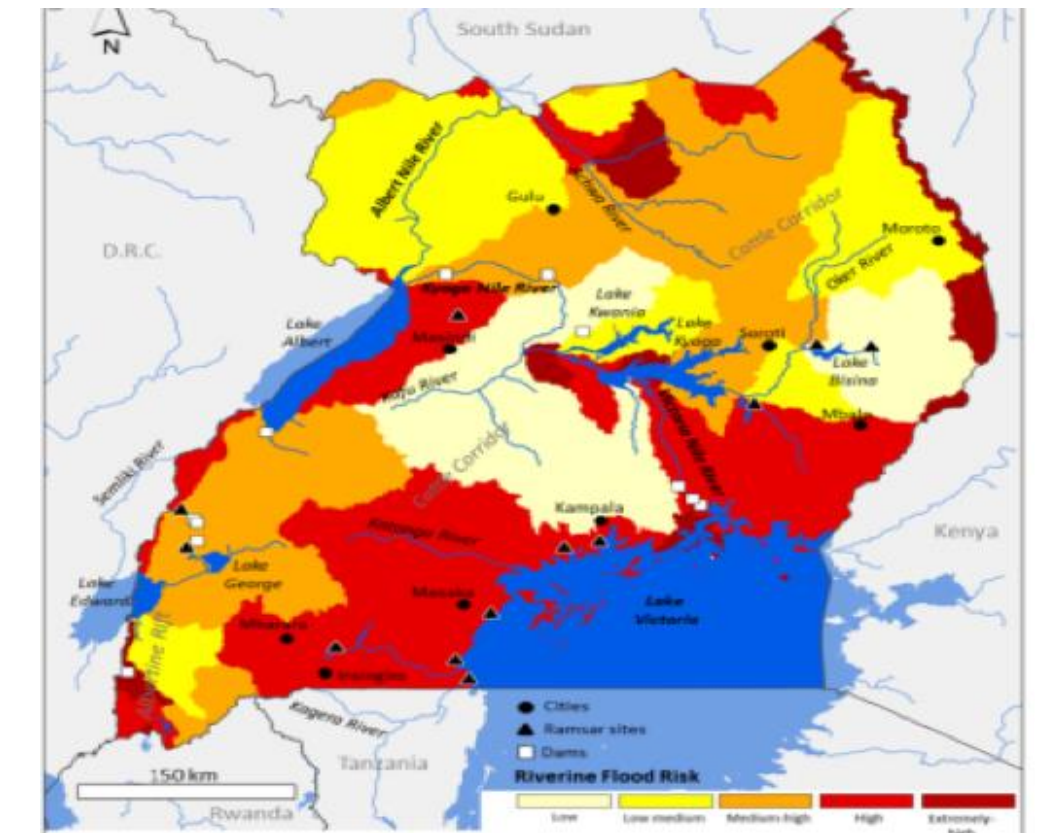
GCA Business Line Climate Resilient Water Services

Expected Achievements

Climate hotspots identified - A climate risk assessment that will serve to understand climate risks and identify hotspots for the WSSP III project.

Increased resilience of assets - A suite of adaptation measures to address the key challenges identified and priority actions implemented under WSSP III.

Increased health and productivity - Contribute to improved health and productivity of the population and reduction of epidemic diseases through provision of safe water and sanitation services.



Uganda Drought and Riverine flood risk. Source: Uganda Water Resources Profile.

Community based Catchment Management- Bangladesh



GLOBAL
CENTER ON
ADAPTATION

Project Background

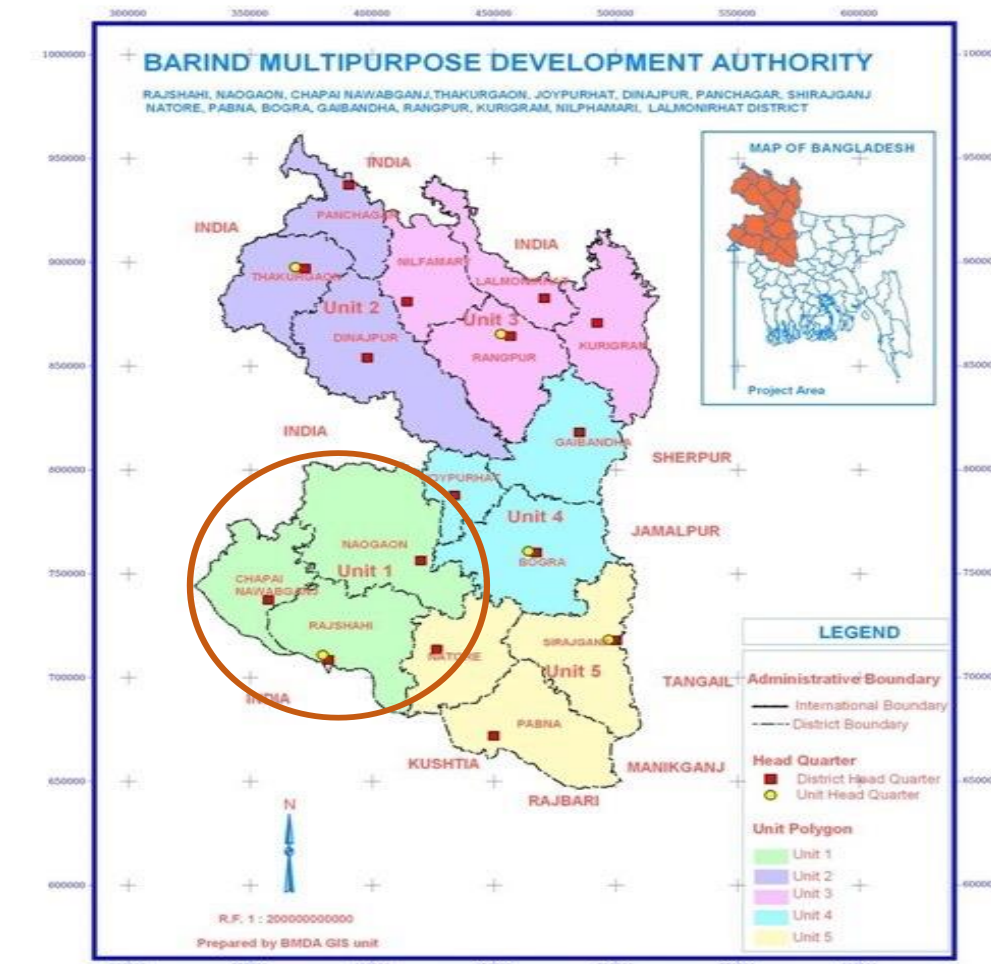
- Water is fundamental for life, closely linked with social and economical development and offers a range of services;
- In practice, however:
 - a) the **multi-sectoral nature** of water is often not recognised;
 - b) development activities also predominantly **take place within a community/village/city** rather than their sub-catchment;
 - c) local communities are either **not aware or not encouraged** to consider wider catchment issues and solutions;
- Climate change coupled with social and economic development stressors suggest water **cannot be considered in isolation**;
- **Catchment management** recognises the complex nature of water management and identifies options beyond operational boundaries of a unit such as community, village or city;
- **BRAC will be piloting** community-based catchment management for resilient water services in drought prone and water scarce Barind region of Bangladesh.

Expected Achievements

Integrated rural development- Sustainable, resilient and inclusive catchment management and leveraging BRAC's integrated development program will support climate resilient water services in the Barind region;

A series of tools and methods for practice- A catalogue of multi-functional methodologies, tools, solutions and knowledge products for catchment level water management solutions for Barind;

Capacity and awareness building- A range of capacity building, awareness raising activities targeting communities, local government officials and other relevant agencies including BRAC integrated development staffs;



Project budget €250,000

Region Barind, Bangladesh

Partner BRAC Bangladesh

GCA Business Line Climate Resilient Water Services



WAC

Water Adaptation Community

Water & Urban
Program

Date:
January 29th, 2023

Water Adaptation Community

Project Background

Water Adaptation Community (WAC) aims to connect all who work on water issues and nature-based solutions across sectors and professions to share experience and knowledge. It goes beyond the "water sector" to bridge the whole Water Community and supporting implementers on their adaptation journey. Through community events and meetings WAC fosters peer learning.

Simultaneously the **facilitators identifying bottle neck issues, knowledge gaps, and learning needs, to connect upcoming events to the communities emerging needs.** The Water Adaptation Community facilitators, with the support of GCA External Affairs and the International Panel on Deltas and Coasts, act as **knowledge brokers between the community-level implementers/leaders and national and international policymakers.**

The strategies: 1. Community consultation; 2. Knowledge brokering and development; 3. Influencing the high-level policy agendas.

Communities of Practice: Urban resilience, Deltas and coastal zones, Small island/Large ocean states, Drylands, Nature-based solutions, River basins and watershed management, and Floating and resilient development.

Achievements

7 Communities of Practice with connectively and information sharing through the WeAdapt platform. **Webinars** brokering knowledge of water adaptation solutions (environmental, financial and capacity based solutions), with a discussions that highlight calls to action for policy and research.

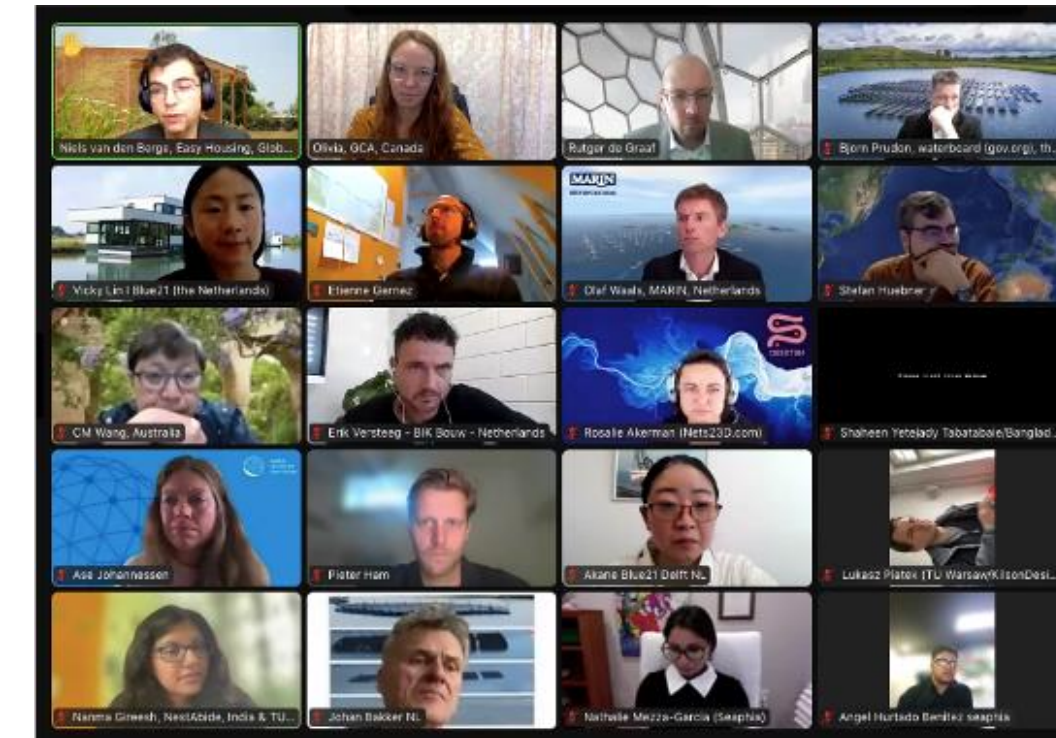
Launched online knowledge exchange even format for more in-depth topic specific knowledge brokering in group discussions

Bi-monthly community meetings to discuss emerging water adaptation challenges.

Knowledge products (targeted for implementers) example on mainstreaming water and climate adaptation produced (release Q1 2023), which serve implementers sharing "how-to" of mainstreaming water adaptation, opposed to the "what to do" approach.

Partnered with International Panel on Deltas and Coastal Areas to bring community knowledge and engagement opportunities to connect to the high-level panel

GCA Policy Influence Incorporating WAC community policy messaging into GCA's external affairs work and policy and messaging for UN Water 2023



Mainstreaming water adaptation for climate resilience - community group discussion and mainstreaming report announcement

